



LP025V3 - « Absolute » pressure logger with quick coupling



Compact and self-contained, this recorder enables a rapid pressure measurement without the risk of interfering with the use of the drinking water system.

- Quick and easy installation
- Autonomous in energy and communication
- Pressure sensor 0-25 bars integrated
- Quick coupling
- 1 voltage input (7V...30V)
- 2 counter inputs 100 Hz
- 1 open drain output
- Wireless configuration by radio
- Data transfer in HF / GSM / 3G
- Certification : NSF/ANSI 61/372 according to MH60087
- Excel report

Principle of installation

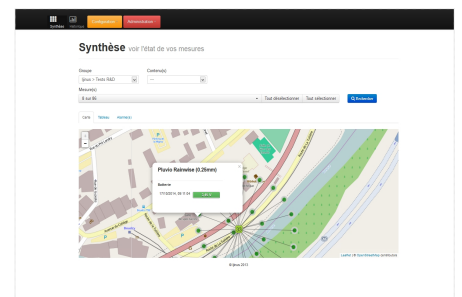
- Changing the Fire hose Cap
- Sensor/cap connection via flexible (the connection can be made under pressurized network)
- Opening the valve
- Configuring and monitoring the logger « remotely » (HF)
- Record with Calendar Variable Scan Interval



Fire plug with quick connector



Flexible connecting





**Web services
ijitrack.com**



LP025V3 - « Absolute » pressure logger with quick coupling

Logger LP025V3

Pressure sensor	Integrated
Datalogger	1.200.000 Measures
Inputs	1 voltage input (7V...30V), 2 digital input counting 100 Hz
Output	1 output open collector
Antenna HF	Internal or External according to model
Option Antenna GSM	Internal or External according to model
Connector	Quick coupling on hose
Housing	ABS 20%FV
Sealing	IP68
Energy	Bat : 3,6V 17 Ah à 34Ah
Programming	Software AVELOUR in wireless by RFID
Dimension LP025-80	Ø 74 x 208
Net weight	346 g
Certification Atex Zone II	 II 3G Ex ic ec IIB T4 Gc Tamb : -20°C...60°C
Certification	 NSF/ANSI 61/372 according to MH60087

Loggers part numbers

LP025V3-80	Logger autonomous HF (reports local radio)
LP025V3-82-3G	Logger autonomous HF/3G

Accessories part numbers

F0A00081	Flexible with two quick couplings
BCH65	Plug DN65 for fire pole

Integrated pressure sensor

Logger pressure	Absolute
Range	0-25 bar
Test pressure	50 bar
Burst pressure	200 bar
Accuracy	≤ 0.5 % of full scale
Operating temperature	-30°C à + 85°C
Storage temperature	-30°C à + 100°C
Media	Tous les liquides class 2
Non-linearity	0.2 % of full scale
Non-transferability	0.1 % of full scale

Plan LP025-80

